

Map of Klíny/Seiffen area

Intended for minicyklogaining with fixed controls

Scale: 1:50 000, contour interval: 10 m

0 0,5 1 2 km



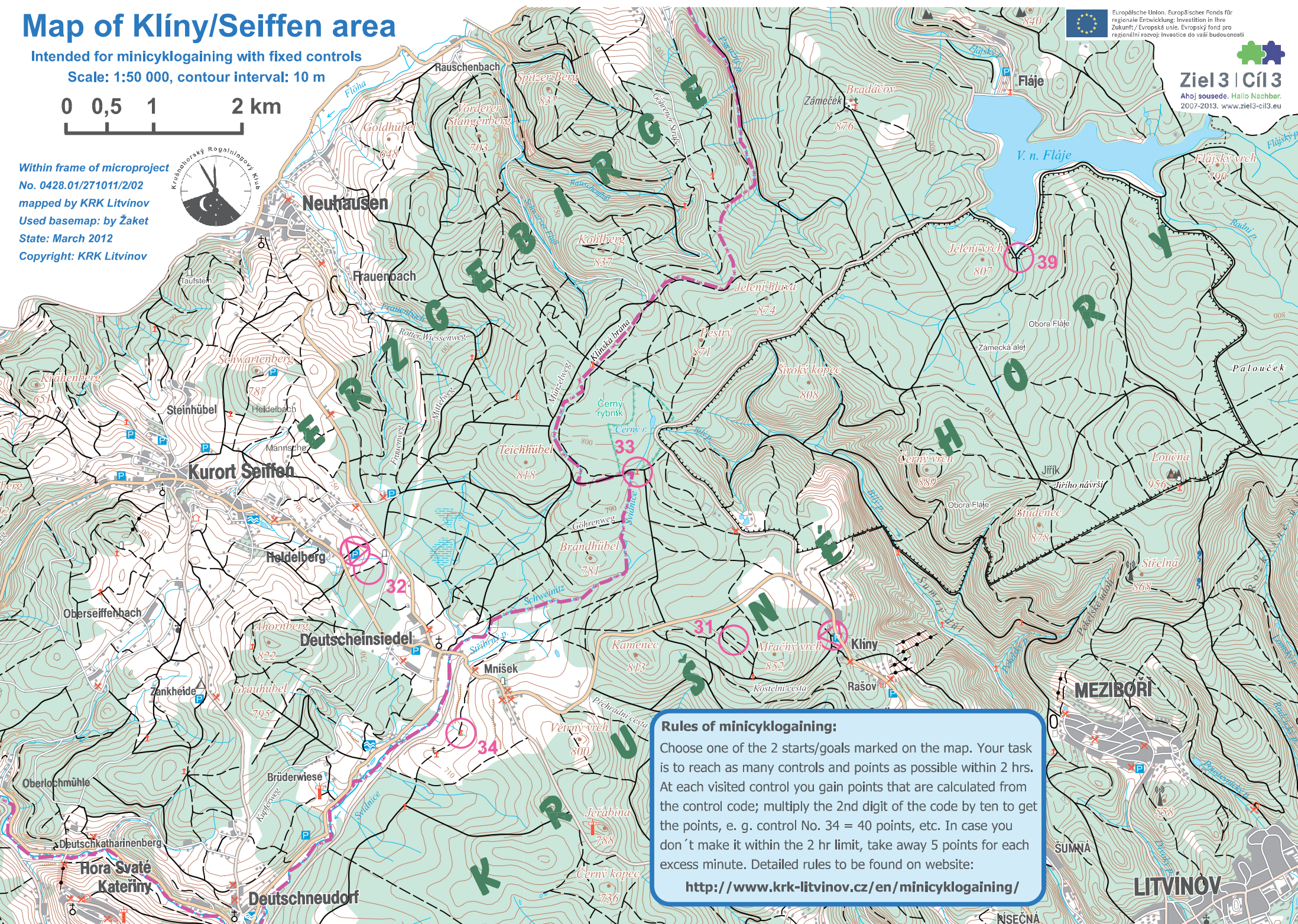
Evropská unie, Evropský fond pro regionální rozvoj: Investice do vaší budoucnosti
Zukunft / Evropská unie, Evropský fond pro regionální rozvoj: Investice do vaší budoucnosti



Ziel 3 | Cíl 3

Ahoj sousede, Hallo Nachbar.
2007-2013, www.ziel3-cil3.eu

Within frame of microproject
No. 0428.01/271011/2/02
mapped by KRK Litvinov
Used basemap: by Žak
State: March 2012
Copyright: KRK Litvinov



Rules of minicyklogaining:

Choose one of the 2 starts/goals marked on the map. Your task is to reach as many controls and points as possible within 2 hrs. At each visited control you gain points that are calculated from the control code; multiply the 2nd digit of the code by ten to get the points, e. g. control No. 34 = 40 points, etc. In case you don't make it within the 2 hr limit, take away 5 points for each excess minute. Detailed rules to be found on website:

<http://www.krk-litvinov.cz/en/minicyklogaining/>